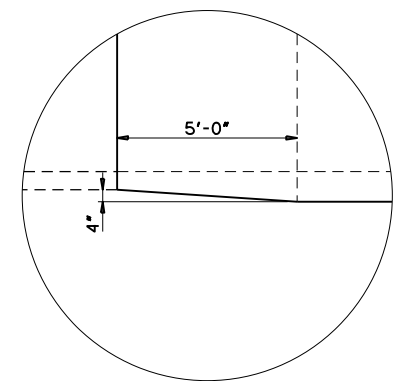
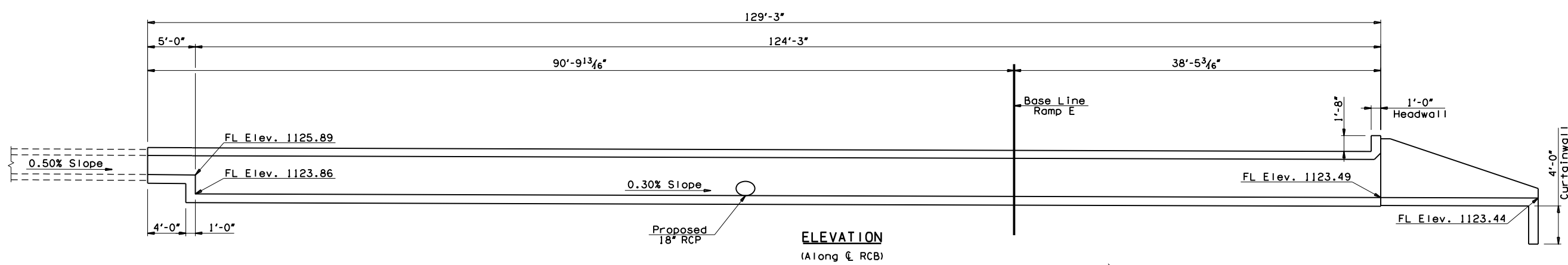
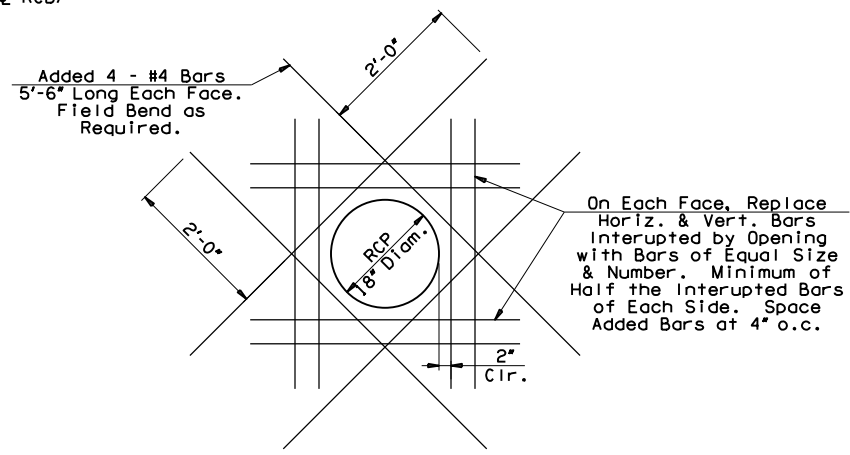


NOTES:
 See Sheet No. 148 for SECTIONS A-A, B-B, & C-C.
 See Sheet No. 150 for Apron & Wing Wall details.



CELL WALL TRANSITION
 (Typical at exterior walls)



ADDITIONAL REINFORCEMENT AT RCP

1-44 OVER CREEK BRIDGE "B"	COMANCHE COUNTY	DESIGN	BRT	07/12
4 - 5'x4' REINFORCED CONCRETE BOX CULVERT DETAILS (SHEET 2 OF 5)		DETAIL	BSB	04/13
		CHECK	BRT	04/13
GARVER				
STATE OF OKLAHOMA		DEPARTMENT OF TRANSPORTATION		
JOB PIECE NO. 27050(04)		SHEET NO. 147		